

CASE II
AGRICULTURE

MAGNUM™ SERIES

224 - 335 HP RATED POWER
257 - 368 HP MAXIMUM POWER



FOR THOSE

EVERY SINGLE DAY, YOU DEMAND MORE. MORE FROM THE LAND. MORE FROM YOURSELF. MORE FROM YOUR EQUIPMENT. WHICH IS WHY WE ALSO DEMAND MORE. MORE POWERFUL ENGINES. MORE PRODUCTIVITY-BOOSTING FEATURES. MORE APPROACHABLE AND KNOWLEDGEABLE CASE IH EXPERTS. AND WE DO ALL THIS TO BETTER SERVE YOU AND THE NEEDS OF YOUR OPERATION.

MAGNUM TRACTORS HAVE PROVIDED INDUSTRY LEADING POWER AND INNOVATION GLOBALLY TO FARMING OPERATIONS SINCE 1987. FOR TWO DECADES MAGNUM HAS STOOD FOR BEST-IN-CLASS CAB COMFORT, FUEL EFFICIENT POWER GROWTH, AND INCREASED PROFIT-PER-ACRE. DEMAND MORE PERFORMANCE AND EFFICIENCY IN YOUR OPERATION - DEMAND THE BEST WITH CASE IH MAGNUM TRACTORS.



WHO DEMAND MORE



4	LEADING THE INDUSTRY
6	CAB ENVIRONMENT
8	CONTROLS
9	LIGHTING
10	ENGINE
12	TRANSMISSION
14	HITCH, HYDRAULICS & PTO
16	FRONT AXLE OPTIONS
18	ADVANCED FARMING SYSTEMS
20	SERVICEABILITY
22	OUR SYSTEMS APPROACH
23	SPECIFICATIONS

Power by tradition. With 5 models to choose from ranging between 224hp and 335hp, the MAGNUM range meets your business requirements.

Highest driving comfort. Front axle suspension, Positive Response Seat and hitch cushion ride control work together to give you maximum control and suppression of jolting.

Headland Management Control saves you time and effort. This system can store up to 30 headland related operations and has a simple record and playback facility.

Drive at 50kph now! MAGNUMS are designed to travel at up to 50kph, where market regulations allow, meaning you can increase the speed of your operation measurably from day one.



All-round visibility from a commanding position. Step up into your new MAGNUM for uninterrupted 360° surveillance in all conditions.

Maximum uptime - never stop driving. Daily checks are carried out quickly and easily and you won't need to refuel again until the end of the day. Original Case IH spares are always readily-available.

► MAGNUM tractors have been proudly built at the **Racine, Wisconsin Manufacturing plant** since the original 7100 Series in 1987.



Advanced Farming Systems. Integrated technology like CAN-bus electronics and the AFS AccuGuide Auto-Guidance System allow less fatigue, more accurate fieldwork and lower input costs.

LEADING THE INDUSTRY

EFFICIENT POWER. PRODUCTIVE COMFORT.

SINCE THE FIRST 7100 SERIES WAS LAUNCHED IN 1987, CASE IH MAGNUM TRACTORS HAVE CONTINUED TO SET INDUSTRY BENCHMARKS FOR CAB COMFORT, EASE OF OPERATION, AND POWER TO THE GROUND.

Power and innovation have been MAGNUM Series trademarks. From their durable engine and Powershift transmission, to the most roomy and comfortable cab in the industry, MAGNUM tractors have continued to raise the bar on productivity.



Model	Rated power kW/hp(CV)	Maximum power kW/hp(CV)
MAGNUM 225	165 / 224	189 / 257
MAGNUM 250	185 / 251	210 / 285
MAGNUM 280	205 / 279	230 / 313
MAGNUM 310	227 / 309	254 / 345
MAGNUM 335	246 / 335	271 / 368

Power Mirrors let you adjust rear views at the touch of a button.

Automatic temperature control lets you preselect the perfect temperature without the need for constant adjustment, for continuous comfort throughout the day and night.

Narrow steering console for excellent visibility to the ground and your crop.

▼ **A-Post instrument cluster with optional performance monitor** tracks important functions and data for convenient at-a-glance monitoring.



CAB ENVIRONMENT

MORE VISIBILITY. MORE COMFORT.

INDUSTRY'S LARGEST CAB PROVIDES VISIBILITY, COMFORT AND PRODUCTIVITY.

- 1 Standard instrumentation
- 2 Performance monitor
- 3 Shuttle shift control
- 4 AFS Pro 600 colour display
- 5 Throttle with integrated gear selection thumbswitch
- 6 Right hand armrest controls
- 7 Ride control
- 8 Blower Speed Control
- 9 Front windscreen wiper, with stepless adjustability
- 10 Temperature control
- 11 Climate control and demisting switches

Yes, this is the largest cab in the industry. Yes, it does provide industry-leading visibility, comfort and automation features. With more than 450 million working hours in the field, the engineering behind the MAGNUM Surveyor cab is based on down-to-earth knowledge and experience. Engineering that translates into unsurpassed operator comfort, ruggedness and ease of operation. Yes to more working hours per day!

Uninterrupted vision. Excellent visibility in all conditions, day and night – an essential feature that is basic to the MAGNUM Surveyor cab. The windscreen is a single sheet of glass that reaches right down to the floor giving you an uninterrupted view of the wheels. In addition to the front and rear washers and wipers, a wiper has been fitted to the right-hand window to ensure full vision at all times and in all conditions.

Comfortable conditions in any climate. The MAGNUM's cab lets you relax in the most comfortable conditions. Choose your ideal operating temperature with the automatic climate control system. Heater and air-conditioning outlets are strategically positioned throughout the cab for ideal airflow control and top de-misting performance.



► **Optima seat upgrade options** include the instructional seat, red leather bucket seat, and new Positive Response Suspension system that automatically adjusts the seat shock absorber up to 500 times per second for smooth ride over the roughest terrain.

◄ Both the **deluxe and luxury Optima seats** are fully adjustable in every way, including ride firmness, lumbar support, float isolators, swivel, backrest angle, left armrest height and tilt – even the standard seat heating system is adjustable.



CONTROLS



EFFORTLESS CONTROL. LESS FATIGUE.

ERGONOMIC ARMREST CONTROLS AND CORNER-POST INFORMATION AT-A-GLANCE BOOST YOUR PRODUCTIVITY DAY AFTER DAY.

▲ The **AFS Pro 600 colour display** makes tractor performance information even more accessible. This display, which can be customised, allows you to decide exactly tractor operating information and AFS AccuGuide controls you want to see and record based on your individual operation.

▼ **Headland Management Control** is easy to use and allows you to record a combined sequence of up/down shifting, engine speed, hydraulic remote valve control, hitch raise/lower, MFD on/off and differential lock on/off. Perform all your end-of-row functions automatically by pressing just one switch.



▼ **Right-hand armrest controls** are integrated to move with the seat as it is adjusted. Your arm rests on a padded cushion with easy access to most controls including the integrated gear/throttle lever, ergonomically designed for long days in the field.



▶ The **performance monitor** can display percent of power usage, wheel slip, fuel consumption, remaining fuel, distance traveled, acres covered, hydraulic flow settings and much more.

- 1 Throttle with integrated gear selection thumbswitch
- 2 Hitch up/down switch
- 3 Remote hydraulic control levers
- 4 Headland management control
- 5 Hitch load control
- 6 Hitch position control
- 7 MFD control switch
- 8 Differential lock
- 9 5th remote (optional)
- 10 Remote valve function control
- 11 Slip limit control switch
- 12 Auto Shift
- 13 Depth control/laser scraper switch
- 14 PTO control switch
- 15 Hydraulic flow controls
- 16 Hydraulic valve timer



LIGHTING

◀ The **instrument cluster** located in the right-hand cab corner 'A-post' is positioned in your natural field of vision and displays important status information at-a-glance.

▼ Optional **High Intensity Discharge** work lighting can be installed between the front headlights, as well as in the rear fender area, to deliver ultimate night visibility.



SUPERIOR LIGHTING. 24/7 PRODUCTIVITY.

LIGHT UP YOUR FIELDS WITH MAGNUM'S
360-DEGREE VISIBILITY AFTER DARK.

With excellent visibility all around the tractor, you can operate with greater confidence as well as added safety. Through the panoramic cab glass, you have clear sight lines to the tires, crop, and implement that help you get the most out of your tractor in a day. When late hours are what it takes to get the job done, the MAGNUM tractor is well-equipped to provide you with that same level of superior visibility, even after dark. Take your pick of lighting packages including standard halogen along with optional High-Intensity-Discharge (HID) lighting technology.

◀ For maximum illumination, opt for the **360° work lamp package** that includes 3 front HID lamps, 2 rear fender HIDs, plus 2 roof side-mounted halogens, as well as helpful egress lighting for exiting the tractor in the dark.



High pressure common rail electronic fuel injection system on all models delivers the **best power growth in the industry.**

Cross-flow head design maximizes efficiency by positioning the intake and exhaust manifolds on opposite sides of the engine, allowing cooler air to be utilized.

Sturdy surround frame and isomounted engine independent of the transmission help reduce vibration and stress to components, extending service life with greater reliability.

Four valves per cylinder improve fuel economy and increase power.

Wastegate turbocharging improves low-end lugging ability, while maintaining critical air-to-fuel ratios.



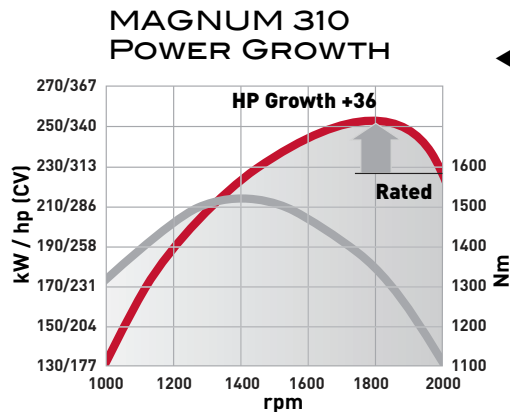
- ▶ Approved for use with up to 100 percent biodiesel fuel blends (B100).



FUEL EFFICIENCY. POWER GROWTH.

INDUSTRY-LEADING POWER GROWTH UP TO 36HP FOR UNMATCHED PERFORMANCE IN TOUGH PULLS.

There are five MAGNUMS to choose from. The MAGNUM 225 and 250 are equipped with 8.3 litre engines and output at maximum of 257 and 285 horsepower respectively. The MAGNUM 280, 310 and 335 features a 9.0 litre engine and delivers a maximum of 313, 345 and 368 horsepower.



◀ **The MAGNUM 310's power** growth capability turns engine power of 309hp at the rated 2000rpm into 345hp when needed, a power reserve that you'll appreciate under full load.

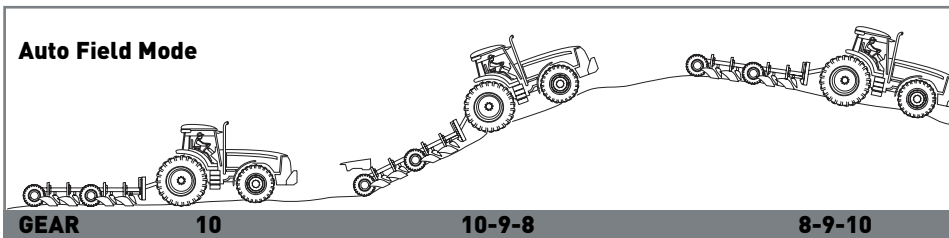
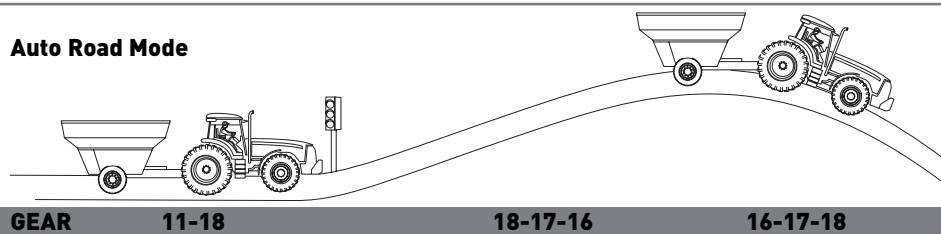


◀ **Constant Engine rpm switches** (optional) allow you to choose your desired maximum engine speed for applications such as planting, spraying and tillage. Like the cruise control in your pickup, this feature can save you fuel when set at an economical 1800rpm — the same speed that provides peak horsepower in tough conditions.

▼ **Full Powershift transmission**, provides seamless smooth shifting from zero to 40 or 50kph.

▼ **Creep gears option** offers an additional 5 speeds from 225m/h to 1.6kph @ 2,000rpm.

AUTO SHIFT



SOLID EFFICIENCY. AUTO SHIFTS.

FOR RAW PULLING EFFICIENCY, IT'S TOUGH TO BEAT THE PROVEN MAGNUM FULL POWERSHIFT TRANSMISSION WITH STANDARD AUTOMATIC SHIFT.

MAGNUM's standard full Powershift transmission is a modern relative of the transmission that originated in the original MAGNUM 7100 Series, known for its long, dependable service life. Today's MAGNUM Powershift provides unprecedented shift quality thanks to "pulse width modulation", a form of electronic control that allows smooth shifts and less fatigue at the end of long days on the grain cart.

Eight working speeds in the critical working range of 4 to 12kph with a 14 percent speed change between gears let you operate at the most productive speed for the implement. Plus, you can program the tractor to start up in any gear you choose (1 through 12) for quicker start-ups in any application.

For slow-speed speciality situations, an optional shift through creeper transmission with 5 forward and 2 reverse speeds is available on all models. The shift through creeper allows the operator to engage or disengage creep at the end of the rows without stopping.

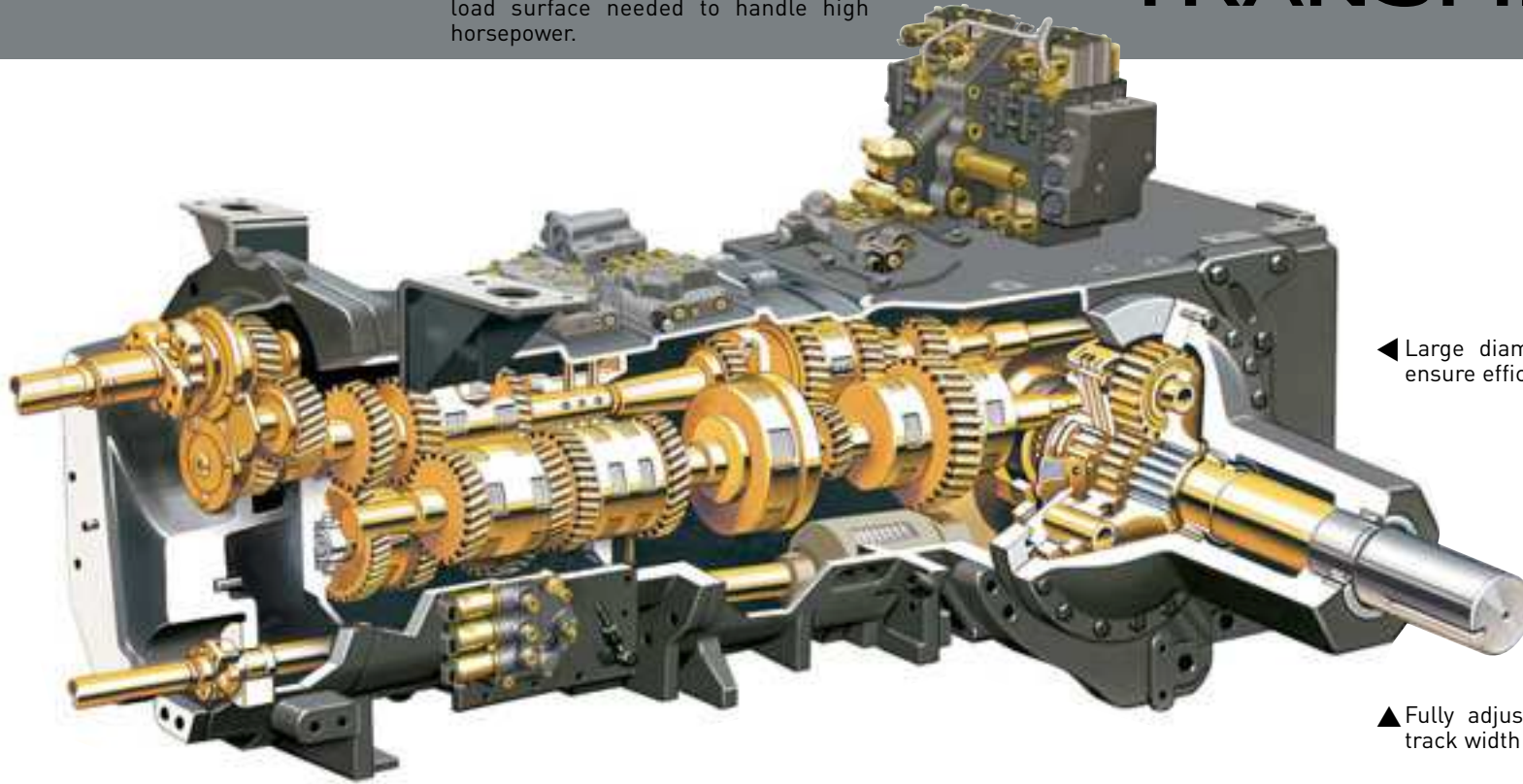
► **Integrated gear/throttle lever** provides the ultimate ergonomic speed control.



TRANSMISSION

▼ Electrically actuated, hydraulically applied clutch packs provide smooth shifting, regardless of the load.

▼ All models are equipped with four-pinion differentials. The pinion gears ride on needle bearings, providing the bearing load surface needed to handle high horsepower.



◀ Large diameter planetary final drives ensure efficient power transfer.

▲ Fully adjustable bar axle for versatile track width settings.

▲ Efficient countershaft design promotes a reliable transfer of power from the engine to the axle.

▲ Transmission gears ride above the fluid level on needle bearings and are pressure lubed from within. This ensures complete lubrication of the components, yet offers far greater efficiency than submerging the gears in oil.

▲ Multi-plate wet clutch, designed to protect the transmission and provide feathering capabilities. Up to 54.5 litres per min of oil flow through the clutch provides continuous cooling, almost eliminating clutch wear and heat build-up.



◀ Change direction of travel without using the clutch by simply moving the Powershuttle lever.

▶ **Let Autoshift select the right gear** to maintain engine revs.



▼ **High-capacity hitch options** are available to handle heavy mounted Cat. III or IVN implements with up to 7,420kg lift capacity.

▼ **Pneumatic or hydraulic brakes** available for trailers.

▼ **Automatic stabilizers** prevent implements swaying when the hitch is raised.

▼ **Power-beyond kit** provides hydraulic power supply, return, load sense and case drain for easy hookups such as pull-type sprayers.



HITCH, HYDRAULICS & PTO

HIGH FLOW. STRONG HITCH. PTO POWER.


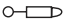
HIGH-CAPACITY PRESSURE FLOW COMPENSATING (PFC) HYDRAULICS, HEAVY-DUTY HITCH AND DRAWBAR, AND NUMEROUS PTO OPTIONS.

Hydraulic flow, hitch lift and PTO capabilities needed to handle today's larger implements such as planters and air seeders are no problem for the MAGNUM's trusted PFC hydraulic system and multiple hitch, PTO and drawbar options.

Heavy-Duty Hitch & Drawbar with standard electronic draft control provide up to 7,420kg lift capacity through the full range, giving you the versatility to move up to wider, heavier implements. Slip Limit Control with radar lets you adjust maximum slip according to your application. Hitch Ride Control reduces bouncing during transport with mounted implements.

Advanced Hydraulics rely on a PFC design with up to five electro-hydraulic remote valves. It ensures high capacity, quick responses, and has flexibility to simultaneously perform several functions without sacrificing performance. Five-function remote lever controls can be easily set from the righthand control console — orbital motor, loader, full function, no float and lock. Programmable valve timer lets you set engagement times right from the cab.

Choose from **multiple speed shaft PTO option** to handle whatever implement you're pulling. MAGNUM's PTO system is hydraulically activated and electronically controlled for smooth modulation and component protection. The PTO clutch is positioned on the top shaft for quieter operation. The PTO shaft can be rotated for easy coupling of implements.

 **168.6**
AUX TIMER 
Timer 1 24 sec
Timer 2 24 sec
Timer 3 20 sec
Timer 4 20 sec
Timer 5 20 sec
A EDIT SEL B

HYDRAULIC FLOW

Model	MAGNUM 225-310	MAGNUM 335
Standard Flow (l/min)	166	175
Optional High-Flow	224	236
Optional Twin-Flow	166+118	175+122



▲ **The hydraulically adjustable hitch** top-link option offers flexible control with the ability to adjust the pitch of implements on the go from inside the cab.

▲ **Convenient rear-fender-mounted electric hitch control.** A switch for the hydraulic top link is also included when equipped with this option.

◀ Each **hydraulic remote timer** can be set individually using the optional Performance Monitor for added fuel efficiency.

▼ **Heavy-duty front suspended axle** with new improved seals stands up to the toughest shock loads.



FRONT AXLE OPTIONS

TIGHT TURNS. POWER TO THE GROUND.

MULTIPLE FRONT AXLE OPTIONS PROVIDE INDUSTRY-BEST END-OF-ROW TURNS AND SUPERIOR TRACTION THROUGH THE FIELD.

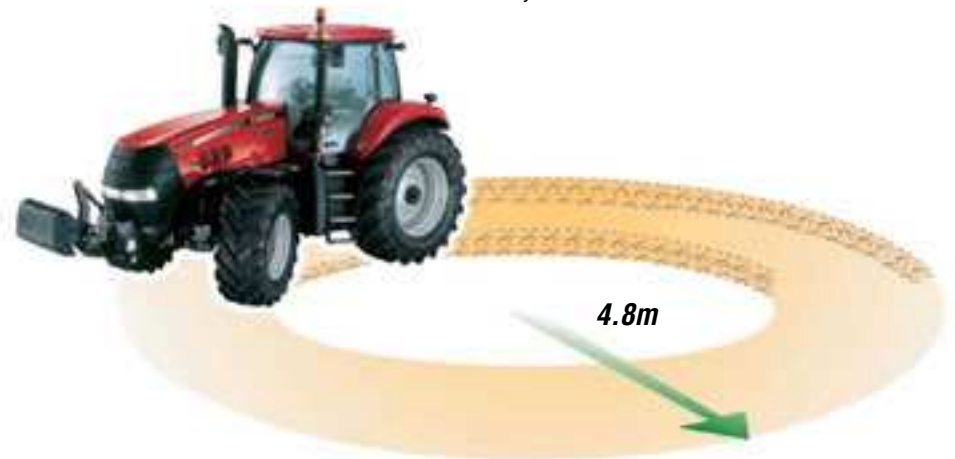
Thanks to the single-piece, sculpted, cast-steel Surround frame and advanced axle design, optimum engine placement and a sleek hood design the MAGNUM is exceptionally balanced and can perform very tight turns of just 4.8 metres radius at the headland. The heavy-duty cast-steel Surround frame also provides a solid mounting location for a front hitch and counterweight set.

Perfectly balanced for energy-saving performance. Getting the ballast right is more important than you might think. Not only do you obtain traction with less soil and crop disturbance when the tractor is correctly balanced, you also save fuel. The bottom line is that using counterweights correctly can save you up to 10% in running costs! The MAGNUM simply makes it easier to get the right balance for each job.

Confident handling with front axle suspension. The front axle suspension system on MAGNUM tractors is electro-hydraulically controlled to maintain consistent power-to-ground contact pressure on any surface. The result is permanent traction and improved operator comfort and ride control.



▲ The **suspended beam front axle design** provides all the advantages of an independent link suspension with less complexity – fewer moving parts and simple controls. With 112mm travel and 6-degree oscillation, it hydraulically handles bumps and dips to smooth out your ride.



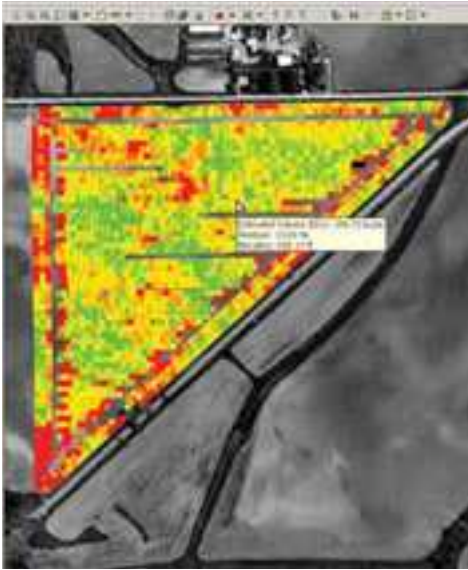
► **Sculpted front end** allows MAGNUM tractors to make the tightest headland turns in the industry.



MAGNUM tractors take the growing popularity of automatic guidance to the next level by offering **AFS AccuGuide as a complete factory installed option.**



ADVANCED FARMING SYSTEMS



PRECISE. PRODUCTIVE. PORTABLE.

AFS ACCUGUIDE™ AUTO-GUIDANCE SYSTEM ELIMINATES THE NEED TO STEER IN OPEN FIELDS, EXCLUDING HEAD LANDS. THE PORTABLE AFS PRO 600 DISPLAY, NAVIGATION II CONTROLLER, AND AFS 252 RECEIVER MOVE EASILY AMONG EQUIPMENT.

PRECISION COMPONENTS MATCH YOUR OPERATION.

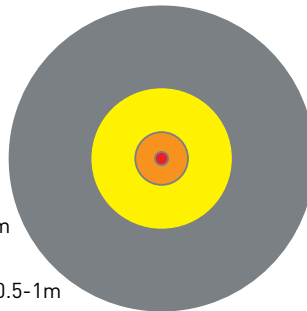
Case IH Advanced Farming Systems (AFS) equipment fully integrates cutting-edge precision farming components for every operation. With features like sub-inch repeatable auto-guidance accuracy, yield and moisture mapping, as applied and prescription planting, the AFS system helps you maximize productivity for optimal crop yields.

AFS DESKTOP SOFTWARE

AFS desktop software enables you to layer yield and moisture maps on top of aerial photographs along with precision farming information including: Trimble®, Ag Leader Technology® and GreenStar® proprietary systems. Customizable charts, graphs and layered maps can be derived for analysis of variety/hybrid, plant population, and soil topography. Dimensions and field-to-field yields can also be used for year-over-year comparisons.

How accurate is DGPS & RTK GPS?

- Case IH RTK 1-2cm
 - 1-2cm pass to pass
- OmniSTAR* HP/XP 25-30cm
 - 5-10cm pass to pass
- DGPS Omni VBS - EGNOS 0.5-1m
 - 15-30cm pass to pass
- Autonomous GPS 1-5m
 - Hiking, boating, vehicle tracking



The AFS AccuGuide System:

- Saves input costs by reducing skips and overlaps.
- Eliminates the guesswork of row swath spacing to ensure each swath is identical, reducing tight headland turns and overlaps.
- Maintains perfectly straight and repeatable rows with RTK accuracy.
- Allows data storage for later analysis and benchmarking to maximize input investments.
- Controls traffic patterns and decreases compaction resulting in higher yields and larger profits.
- Reduces operator stress and fatigue.

▼ **The sculpted hood** provides full access to the engine, air cleaner, radiator and hydraulic oil cooler

▼ With the hood open, the **swing-out radiator is completely accessible** for easy cleaning and maintenance.

▼ **The engine air filter is accessible** from ground level making regular cleaning and periodic replacement quick and easy.

▼ **Refueling is an easier** chore when done from the ground level.



CONVENIENT, TIME-SAVING ACCESS.

MAGNUM SERIES TRACTORS ALLOW EASY ACCESS FOR KEY MAINTENANCE TASKS TO SAVE TIME ON PREVENTIVE MAINTENANCE AND MINIMIZE OPERATING COSTS.

MAGNUM Series tractors simplify maintenance with an extended 300-hour engine oil change interval and easy service access to keep your machine in top running condition. From the easy-opening hood, convenient service steps and ground-level central service points, the MAGNUM was designed to provide unobstructed accessibility. Whether you're monitoring key tractor performance data from inside the cab or checking filters and fluids from ground level, MAGNUM design makes it easy to maintain your equipment and protect your investment.

► **The optional performance instrumentation** displays service reminders for engine oil and filter, engine air filter, battery, coolant flush, transmission oil and filter, fuel filter, coolant filter and hydraulic flow. In addition to helping you keep track of routine service and maintenance requirements, the monitor also detects critically high temperatures or low oil pressures and, if necessary, automatically shuts down the engine to prevent damage.



SERVICEABILITY

A **standard removable toolbox** is located on the righthand side of the cab.

The **batteries** are conveniently located on the righthand side of the tractor. Removing thumb screw covers provides quick access to the batteries without the use of tools.

▼ Your Case IH dealer's service technician can perform **full system diagnostics on site** with a laptop computer, ensuring your MAGNUM tractor performs in top operating condition.



OUR SYSTEMS APPROACH

PARTS & SERVICE

Maintain the productivity of your investment. Case IH and its dedicated dealer network provide excellent support when you take delivery of your new machine and whilst it remains in your ownership. On the farm, you can rely on trained service professionals to maintain the productivity of your investment.

Protect the value of your investment. Behind every Case IH product stands an extensive European parts logistics organisation, stocking more than 700,000 part numbers for products old and new. Choosing to fit genuine Case IH parts will maintain the safety, value and performance of your original investment.



DEALER

Skilled business advisor at your dealership.

Demand more from your Case IH dealership.

Purchasing a stand-alone piece of new equipment? Keeping a whole fleet up-to-date? Whatever your size of operation, contact your local Case IH dealership for professional advice on finance and future-safe business investment. Case IH knows your farming needs best.

FINANCE

Your local Case IH dealer can work with CNH Capital to offer solutions that best fit your budget and business goals.

At CNH Capital, we understand that no two farms or agricultural businesses are the same. That's why we work so hard to understand your needs first. We make it our job to know your business inside and out – your goals, your ideas, and your unique outlook on the future. Then we can put together financial solutions and services that are right for you.



MAX
00800 227344 00
00800 CASE IH 00
100% Support
100% Availability

◀ **MAX - the new premium service from Case IH.** We are always ready for you, around the clock, the whole year. Express delivery: when and where you need it. You get top priority during the season because your harvest cannot wait.

The call is free. However some European Operators may apply a charge, if the call is made from a mobile phone. For any information about charge rate, please enquire in advance from your provider.



◀ **Extended protection programme.**

Case IH is at your side giving you the best professional solution: Safeguard from Covéa Fleet. This is the personalised insurance coverage for your Case IH machinery. Please contact your dealer for more details. Subject to status and availability. Terms and conditions apply.


SPECIFICATIONS

MODELS	MAGNUM 225	MAGNUM 250	MAGNUM 280	MAGNUM 310	MAGNUM 335
ENGINE					
Type / aspiration / emission level	Case IH common rail diesel engine with 24 valves / turbocharged and intercooled / Tier III				
Number of cylinders / Capacity (cm ³)	6 / 8300	6 / 8300	6 / 9000	6 / 9000	6 / 9000
Rated engine power ECE R120 ¹⁾ (kW/hp(cv))	165 / 224	185 / 251	205 / 279	227 / 309	246 / 335
Maximum engine power ECE R120 ¹⁾ (kW/hp(cv))	189 / 257	210 / 285	230 / 313	254 / 345	271 / 368
Max. torque @ 1400rpm (Nm)	1117	1271	1395	1504	1566
Engine torque rise (%)	42	46	40	40	42
Fuel tank capacity (litres)	682	682	682	682	682
TRANSMISSION					
Type	Full Powershift with Powershuttle				
Number of standard speeds 50kph*	19 x 4	19 x 4	19 x 4	19 x 4	19 x 4
Number of standard speeds Creeper 40kph	23 x 6	23 x 6	23 x 6	23 x 6	23 x 6
Differential lock rear axle	Multi-plate with automatic functions				
DRIVE AND STEERING					
Type	Differential lock as standard, front axle suspension optional				
Steering angle (°)	55	55	55	56	56
Min. turning radius ²⁾ (m)	4.8	4.8	4.8	4.8	4.8
POWER TAKE-OFF					
Engagement type	Electronic modulated with overload protection				
Speed Standard / Optional (rpm)	1000 or 540/1000	1000 or 540/1000	1000 or 540/1000	1000 or 540/1000	1000 or 540/1000
Engine speed @ 1000rpm PTO speed (rpm)	1800	1800	1800	1800	1800
Shaft type Standard PTO (number of splines)	20, 1 3/4"	20, 1 3/4"	20, 1 3/4"	20, 1 3/4"	20, 1 3/4"
Shaft type Optional PTO (number of splines)	20, 1 3/4" (1000rpm) or 21, 1 3/8" (1000rpm) or 6, 1 3/8" (540rpm)				
HYDRAULIC SYSTEM					
System type	Variable displacement, pressure flow compensated pump				
Max. pump flow rate Standard / High Flow / Twin Flow (l/min)	166 / 224 / 166+118	166 / 224 / 166+118	166 / 224 / 166+118	166 / 224 / 166+118	175 / 236 / 175+122
Max. system pressure (bar)	210	210	210	210	210
Max. number of remote valves	4 with optional 5th remote; power beyond or low pressure return connection with individual remote valve timer and flow controls when equipped with Performance Monitor				
Remote valve timer control	0 - 30 seconds on all models				
Control type	Electronic hitch control (EHC), cushion ride control, hydraulic top link, automatic stabilizers optional				
Max. lift capacity (kg)	8550	9130	9130	10200	10200
Lift through range @ 610mm (kg)	6280	6710	6710	7420	7420
Category type Standard / Optional	III / IVN	III / IVN	III / IVN	III / IVN	III / IVN
Slip control	●	●	●	●	●
WEIGHT					
Minimum weight (kg)	9136	9136	9377	9377	9568
Weight distribution front/rear	40/60% (without weights)				
DIMENSIONS ³⁾					
Total length / Total height (mm)	5950 / 3265	5950 / 3265	5950 / 3265	5950 / 3265	5950 / 3265
Rear centre axle line to top of cab (mm)	2375	2375	2385	2385	2385
Total width / Wheel base (mm)	2550 / 3005	2550 / 3005	2550 / 3005	2550 / 3005	2550 / 3005
STANDARD TYRES ⁴⁾					
Front	600/65 R28	600/70 R30	600/70 R30	600/70 R30	600/70 R30
Rear	620/70 R42	710/70 R42	710/70 R42	710/70 R42	710/70 R42

*) to comply with legislation and specification in your country 1) ECE R-120 correspond to ISO TR14396 2) Depending on tyres and track width setting 3) With standard tyres 4) Other tyres on request ● Standard

CASE IH: FOR THOSE WHO DEMAND MORE

WWW.CASEIH.COM

 Safety never hurts! Always read the Operator's Manual before working with any equipment. Inspect equipment before using it, and be sure it is operating properly. Follow the product safety signs, and use any safety features provided.

This literature has been published for worldwide circulation. The standard and optional equipment and the availability of individual models may vary from one country to the next. Case IH reserves the right to undertake modifications without prior notice to the design and technical equipment at all times without this resulting in any obligation whatsoever to make such modifications to units already sold. Whilst every effort is made to ensure that the specifications, descriptions and illustrations in this brochure are correct at the time of going to press, these are also subject to change without prior notice. Illustrations may show optional equipment or may not show all standard equipment.

Case IH recommends **AKCELA**™ lubricants

CNH UK Ltd., Cranes Farm Road, Basildon, Essex SS14 3AD

© 2008 CASE IH - www.caseih.com - MAGNUM™ SERIES-UK-BR - Free phone 00800 22 73 44 00 - Printed in Italy - 04/08 - TP01



8C0005/IN8

