



For Earth, For Life  
Kubota

**B**

## KUBOTA DIESEL TRACTOR B2301/2601

The newly introduced B-01 Series tractors bring simplicity and versatility to even the toughest jobs.



# Kubota's new B-01 Series compact tractors are operator friendly, and they can handle the real work, all-day, every day.

Whether you're mowing lawns, working on light construction, or landscaping, Kubota's all-new B2301/B2601 tractors are the ideal tools for the job. Each model offers a wide range of innovative features to provide more comfort and more efficiency, for the utmost in productivity. Combine the ease-of-use and versatility with the power and reliability of renowned Kubota engines and transmissions, and you can consider almost any task complete.



**B2301**

**B2601**



## Engine

22HP/25.5HP liquid-cooled diesel engines, with Kubota's E-TVCS (three-vortex combustion system), offers tremendous power, high torque, cleaner emissions, and low noise and vibration.

## 3-range HST

Our proven hydrostatic transmission provides the B-01 Series with smooth shifting and powerful performance for heavy-duty loader applications. With an increased maximum speed and three range shift-speeds (Low/Med/High), the B2301/2601 models let you find the right speed to suit your task, for outstanding productivity.



## Functionality



### Powerful Category I, 3-point hitch

The 3-point hitch accepts a variety of implements for all your varying needs. Robust and versatile, the hitch can handle rotary tillers, box blades, finishing mowers, and more.

### Hydraulic Independent PTO

The Independent PTO provides continuous travel movement since it is independent from the HST travel control.

### Telescoping stabilizers

Attaching and detaching rear implements has never been simpler. The horizontal sway of the implement is easily adjusted by aligning and setting the pin in the proper hole.

### Factory rear remote control valve kit (optional)

The B-01 Series offers two optional rear remote control valves to allow acceptance of more rear implements.



## Ease of operation

### Pedal layout

To afford easier and more comfortable use of the HST pedal, the brake pedals have been relocated to the driver's left side.

### Position control

To easily adjust the height of implements, the 3-point hitch can be raised or lowered with the 3-point position control, according to the position control lever's stopping point.

### Lever Guides

The B-01 Series features large, angled lever guides. Control lever recognition and operation is simple, intuitive, and hassle-free even for novice operators.



## Comfort

### Expansive operator platform

Thanks to a large, ISO-mounted flat deck, the operator enjoys plenty of legroom and a wider step area for easier mounting and dismounting. Widely spaced fenders also contribute to a comfortable, spacious environment.

### High-back seat

To make your ride comfortable no matter the conditions, the new high-back seat is specifically designed to absorb shock, reducing operator fatigue. For added comfort, armrests are standard equipment.

### Tilt-steering wheel

The steering wheel tilts by the easy-step pedal to improve steering comfort.

### 12V socket

Charge your cell phone or other electronic devices with the 12-volt socket.



## Maintenance

### One-piece metal hood

The front grill and newly designed headlights are integrated with the hood for easier opening and closing, plus the hood provides more convenient access to the engine.

### Tool box

For easy access, a large toolbox is located directly behind the operator's seat.

# Front Loader



## LA434 Front loader

Kubota's powerful new LA434 Front Loader features a curved boom design, outstanding lift capacity, and impressive lift height for great performance. The LA434 enhances your efficiency and productivity on any job that comes your way.

## 2-lever quick coupler (optional)

Kubota's quick coupler features two levers to make quick work of attaching and detaching front implements like pallet forks, snow blades, and more.

## Quick Attach/Detach system

The conveniently located quick-connection pins can be handled without any tools, which makes it easy to attach and detach.



## Front Loader Specifications

Model		LA434
Maximum lift height (to bucket pivot pin)	in. (mm)	78.5 (1995)
Clearance with attachment dump	in. (mm)	61.7 (1568)
Maximum dump angle	deg.	40
Bucket roll-back angle	deg.	25
Lift capacity (Bucket pivot pin, max height)	lbs. (kg)	948 (430)
Lift capacity (19.7in. forward, max height)	lbs. (kg)	659 (299)
Breakout force (Bucket pivot pin)	lbs. (kg)	1521 (690)
Breakout force (19.7in. forward)	lbs. (kg)	2144 (973)



# Mid Mount Mower

## Drive-over Mid-Mount Mower\*

Attach the mower quickly and with ease. Simply drive the tractor over the mower to position it for fast attachment and detachment.

*\*Height of mower deck should be 3 inches or less.*



Cutting Height Adjustment Dial    Suspended Mower Deck

## Mid-Mount Mower Specifications

Model		RCK54-32	RCK60-32
Type		Side Discharge	
Number of blades		3	
Blade length	in. (mm)	18.7 (475)	20.6 (523)
Mounting method		Suspended	
Cutting width	in. (mm)	54 (1372)	60 (1524)
Cutting height	in. (mm)	1.0 to 4.0 (25 to 102)	
Adjustment of cutting height		Dial	
Weight (approx.)	lbs. (kg)	300 (136)	322 (146)

# Backhoe



## BH70 Backhoe

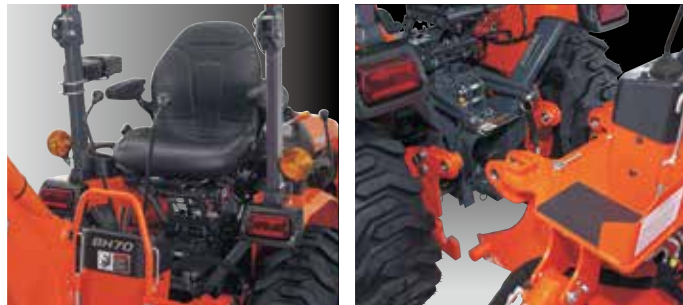
Kubota's original BH70 Backhoe is performance-matched with the B-01 Series tractors to provide more power and greater digging capacity. It also features a reversible seat for more efficient operation.

## Reversible Seat

The B-01 Series tractors feature a new reversible seat. It swivels from front to back, while also providing greater legroom. Designed with the operator's comfort and convenience in mind, it also slides fore and aft without any tools.

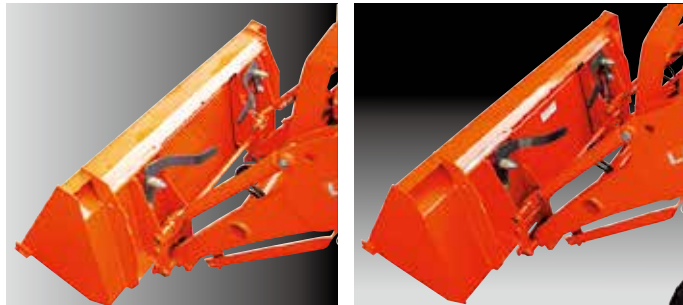
## 4-point Quick-attach System

With its pin-and-hook type quick-attach system you can switch easily, between the backhoe and other rear implements, all without tools. This means even complex tasks can be handled with unparalleled efficiency.



## Backhoe Specifications

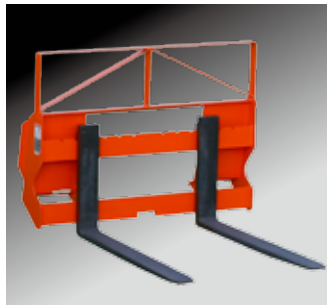
Model		BH70
Transport height	in. (mm)	73.1 (1856)
Stabilizer spread - transport	in. (mm)	50.4 (1280)
Ground clearance	in. (mm)	10.3 (262)
Digging depth 2ft flat bottom	in. (mm)	85.2 (2165)
Operating height fully raised	in. (mm)	113.0 (2869)
Loading height (length of dipper cyl.=680mm)	in. (mm)	61.6 (1474)
Loading reach (length of dipper cyl.=680mm)	in. (mm)	45.6 (1157)
Reach from swing pivot	in. (mm)	116.8 (2966)
Swing pivot to rear axle center line	in. (mm)	31.4 (797)
Angle of departure per SAE J1234	deg.	18.2
Swing arc	deg.	140



Standard Bucket 50", 54", 60" Light Material Bucket 60"



Mechanical Snow Blade 60"&72" Hydraulic Snow Blade 60"&72"



Pallet Fork

## Attachments

Performing multiple jobs, from digging to mowing to hauling, is exactly what the B01 series does best, thanks to a wide range of available implements designed to perform just right. Switching between operations is also simple, as each implement has been designed for quick and easy attachment and removal.

# Specifications

Model	B2301HSD		B2601HSD	
<b>Engine</b>				
Type	E-TVCS, liquid cooled, 3-cylinder diesel		E-TVCS, liquid cooled, 3-cylinder diesel	
Make, Model	Kubota D1005		Kubota D1105	
PTO horsepower	HP (kW)	17.5 (13.0)	19.5 (14.5)	
Engine gross horsepower*	HP (kW)	22 (16.4)	25.5 (19)	
Rated RPM	rpm	2800		
Bore and stroke	in. (mm)	3.0 × 2.9 (76 × 73.6)	3.1 × 3.1 (78 × 78.4)	
Displacement	cu. in. (cc)	61.1 (1001)	68.5 (1123)	
Air cleaner	Dual paper element			
Lubrication	Forced lubrication			
Cooling system	Pressurized radiator			
Radiator fan	Radial air flow			
<b>Capacities</b>				
Fuel tank	gal (ℓ)	6.1 (23)		
Cooling system	qts. (ℓ)	4.0 (3.8)		
Engine oil	qts. (ℓ)	3.3 (3.1)		
Transmission case	gal (ℓ)	4.0 (15)		
<b>Drive train</b>				
Clutch	N/A			
Transmission	HST (3 ranges)			
Differential lock	Standard			
Final drive	Spur gear			
Brake	Multi-plate wet disc			
<b>PTO</b>				
Type	Independent			
Rear	rpm	540		
Mid	rpm	2500		
<b>Hydraulics</b>				
Type	Open center			
Pump	Dual pump			
Total pump output	gpm (ℓ/min.)	8.3 (31.4)		
Hydraulic outlet	Rear outlet			
3-point hitch	Category I			
Hydraulic control system	Position control valve			
Lift capacity	at lift point	lbs. (kg)	1808 (820)	
	24" behind LP	lbs. (kg)	1411 (640)	
Steering	Hydraulic power steering			
<b>Standard tire size</b>				
Front (Farm)	6-12		7-12	
Rear (Farm)	9.5-16		11.2-16	
<b>Traveling speeds</b>				
Forward	mph (km/h)	0-11.9 (0-19.1)	0-12.7 (0-20.4)	
Reverse	mph (km/h)	0-8.9 (0-14.3)	0-9.5 (0-15.3)	
<b>Dimensions</b>				
Overall length (w/o 3P)	in. (mm)	93.7 (2380)	94.9 (2410)	
Overall width (min. tread)	in. (mm)	45.3 (1150)	49 (1245)	
Overall height	in. (mm)	83.9 (2130)	85.0 (2160)	
Wheelbase	in. (mm)	61.4 (1560)		
Ground clearance	in. (mm)	12.0 (305)	12.8 (325)	
Turning radius with brake	feet (m)	6.9 (2.1)		
Weight	lbs. (kg)	1566 (710)	1632 (740)	

\*SAE J1995

The company reserves the right to change the above specifications without notice. This brochure is for descriptive purposes only.

Please contact your local Kubota dealer for warranty information. For your safety, Kubota strongly recommends the use of a Rollover Protective Structure (ROPS) and seat belt in almost all applications. For complete operational information, the operator's manual should be consulted.

©2014 Kubota Corporation



## KUBOTA TRACTOR CORPORATION

Kubota Tractor Corporation, 3401 Del Amo Boulevard, Torrance CA 90503  
 Western Division: 1175 S. Guild Ave., Lodi, CA 95240 Tel (209) 334-9910  
 Central Division: 14855 FAA Boulevard, Fort Worth, TX 76155 Tel (817) 571-0900  
 Northern Division: 6300 at One Kubota Way, Groveport, OH 43125 Tel (614) 835-1100  
 Southeast Division: 1025 Northbrook Parkway, Suwanee, GA 30024 Tel (770) 995-8855

Visit our web site at: [www.kubota.com](http://www.kubota.com)



Cat.No.4234-01-US Printed in Japan.D.REX.'14-SEP.